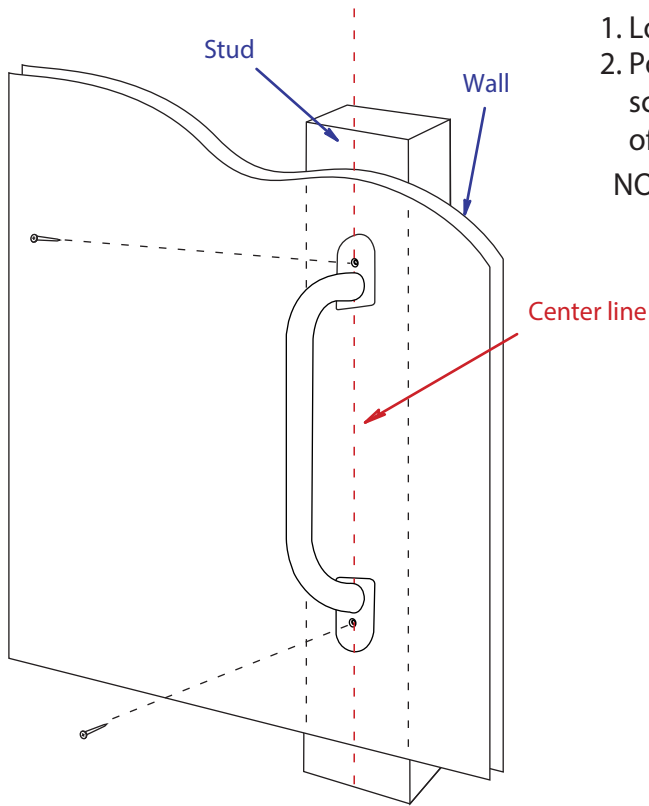


1



1. Locate stud beneath wallboard.
2. Position bar at desired height and screw into place (screws should be in center of wall stud).

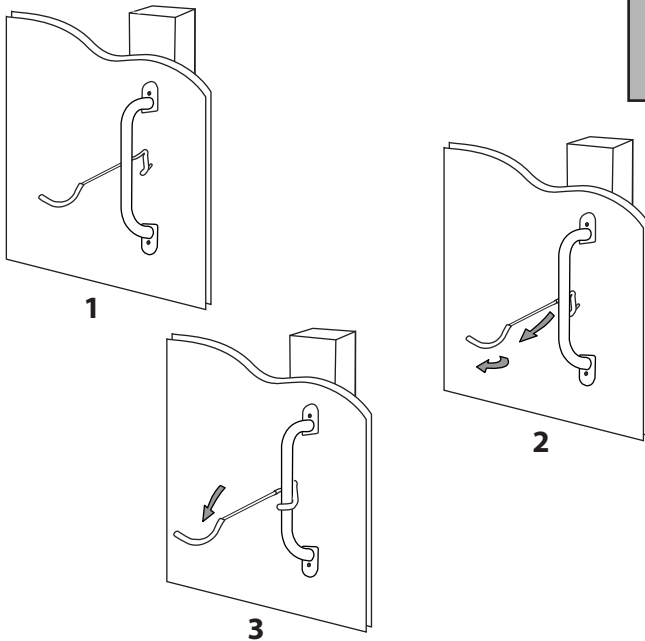
NOTE: Make sure the bar is level when mounting.

IMPORTANT WARNINGS:

DO NOT EXCEED
MAXIMUM TOTAL WEIGHT
LIMIT OF 18 Kg.

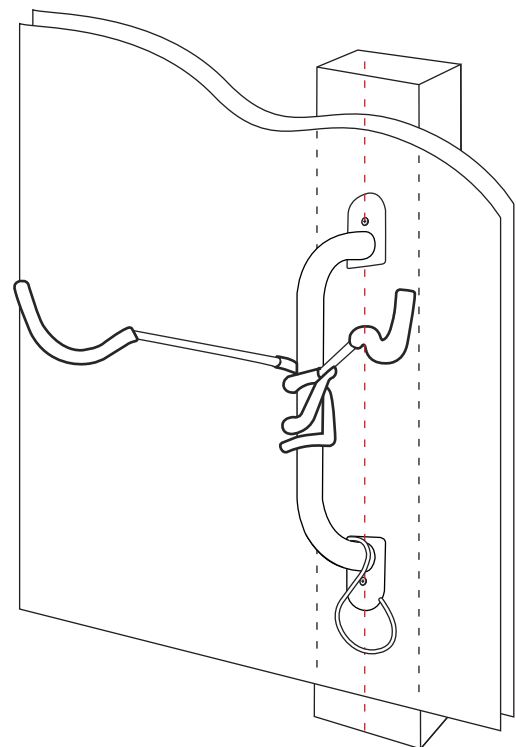
Incorrect wall mounting could result in
items falling and injury to persons.

2



1. Place first hook behind bar sideways.
2. Pull towards you and twist up.
3. Push down to lock into place.
4. Repeat step 1 with second hook.

3



theartofstorage™

Master Distributors
31 Dunlop Road
MULGRAVE VIC 3170
03-9538-9200

Universal Bike Rack
AS6300
Assembly diagram