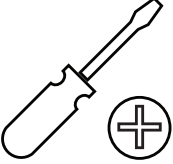
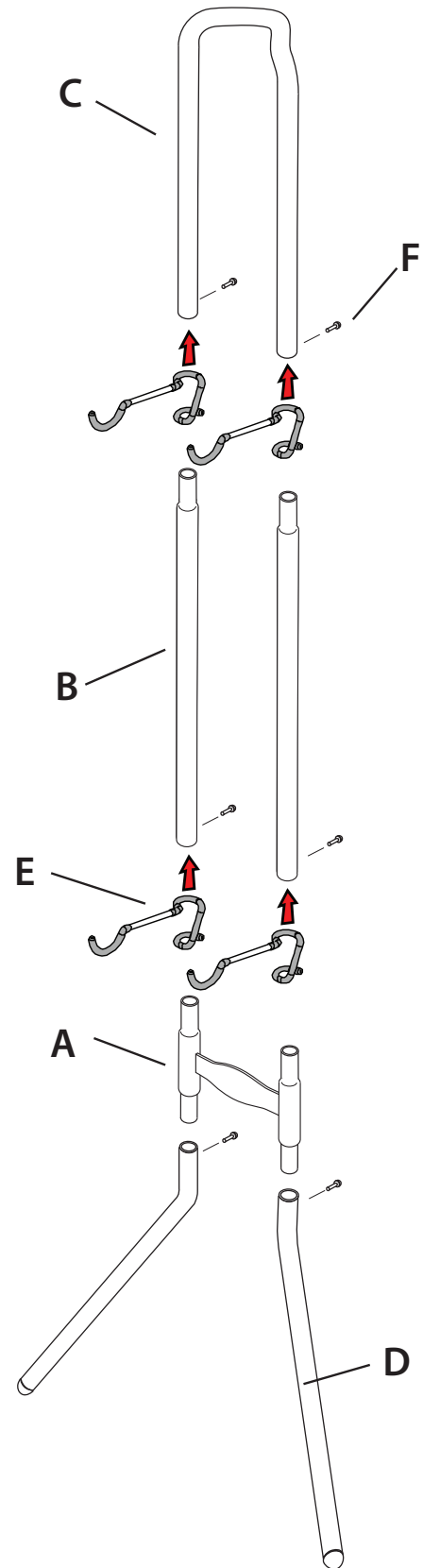


NEED SUPPORT? Email us at info@theartofstorage.com.au

Visit theartofstorage.com.au/gravity-two-bike-rack for an assembly video

Tool required	Reference letter	Part name	Pieces
 <p>Phillips head screwdriver</p>	A	H Piece	x1
	B	Straight poles	x2
	C	U piece	x1
	D	Legs	x2
	E	Arms	x4
	F	Bolts	x6



theartofstorage™

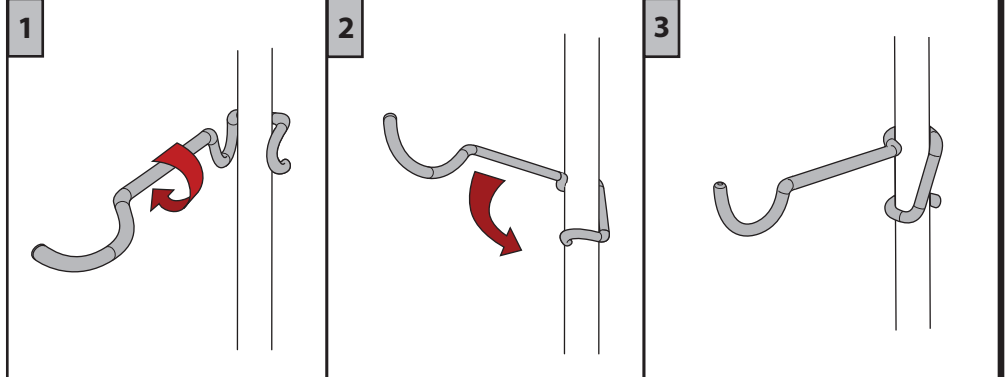
Master Distributors
31 Dunlop Road
MULGRAVE VIC 3170
03-9538-9200

Michelangelo Gravity Two Bike Rack
AS6002
ASSEMBLY DIAGRAM

NEED SUPPORT? Email us at info@theartofstorage.com.au

Visit www.theartofstorage.com.au/gravity-two-bike-rack for an assembly video

ARM ATTACHMENT



ASSEMBLY INSTRUCTIONS

1. Begin assembling the legs and work upwards.
2. Do not tighten bolts until rack is fully assembled and tubes are properly aligned.
3. Adjust height of arms before they bear any weight.
4. Make sure that all bolts are tight before using.

IMPORTANT WARNING

**DO NOT EXCEED MAXIMUM
TOTAL WEIGHT LIMIT OF**
36 kgs

MAX LOAD PER HOOK
11 kgs

MAX WEIGHT PER BIKE
22 kgs

IMPORTANT SAFETY

In order to avoid accidental toppling of the rack, a wall stabilising strap is supplied. This should be attached to the rack at one end with the bolt provided. The other end of the strap should be secured to the wall using a screw that is suitable for the type of wall construction. If in doubt, consult your hardware merchant for the correct method of fixing based on the wall construction.

